

Meeting Minutes

PWG MFD Semantic Model Face-to-Face September 26, 2007

Attendees:

Ron Bergman	Ricoh
Shah Bhatti	Samsung
Nancy Chen	Oki Data
Lee Farrell	Canon
Harry Lewis	InfoPrint
Ira McDonald	Blue Roof Music/High North, Inc.
Glen Petrie	Epson
Jerry Thrasher	Lexmark
Bill Wagner	TIC
David Whitehead	Lexmark
Peter Zehler	Xerox

1. Review of wd-mfdscan10-20070918.doc

- We agreed to the following editorial changes:

- Line 178 - change multifunction device to MultiFunction Device
- Global change – capitalize the letters in a terminology that are used for mnemonic representation
- Line 179 - change operation model to functional model
- Line 181 - emphasize network
- Global change - replace PC and workstation with computer
- Global change - User to End User
- Line 189 - change protects to protect
- Line 204 - change description to descriptive
- Line 234 & 242 - prepend with Scan
- Line 290 - change storage location to Template Repository
- Global change in Design Requirements sections – Use capitalized letters in MUST, SHOULD, etc
- Line 370 – do not require sensing of documents placed on scanner (i.e. no hardware requirements)
- AI - Peter Zehler - supply definition of Template Repository
- AI – Glen Petrie – Send remaining editorial edits to Nancy Chen

- Page 31 Fig. 17 state transition from Test to Idle is missing, not consistent with Fig. 18.

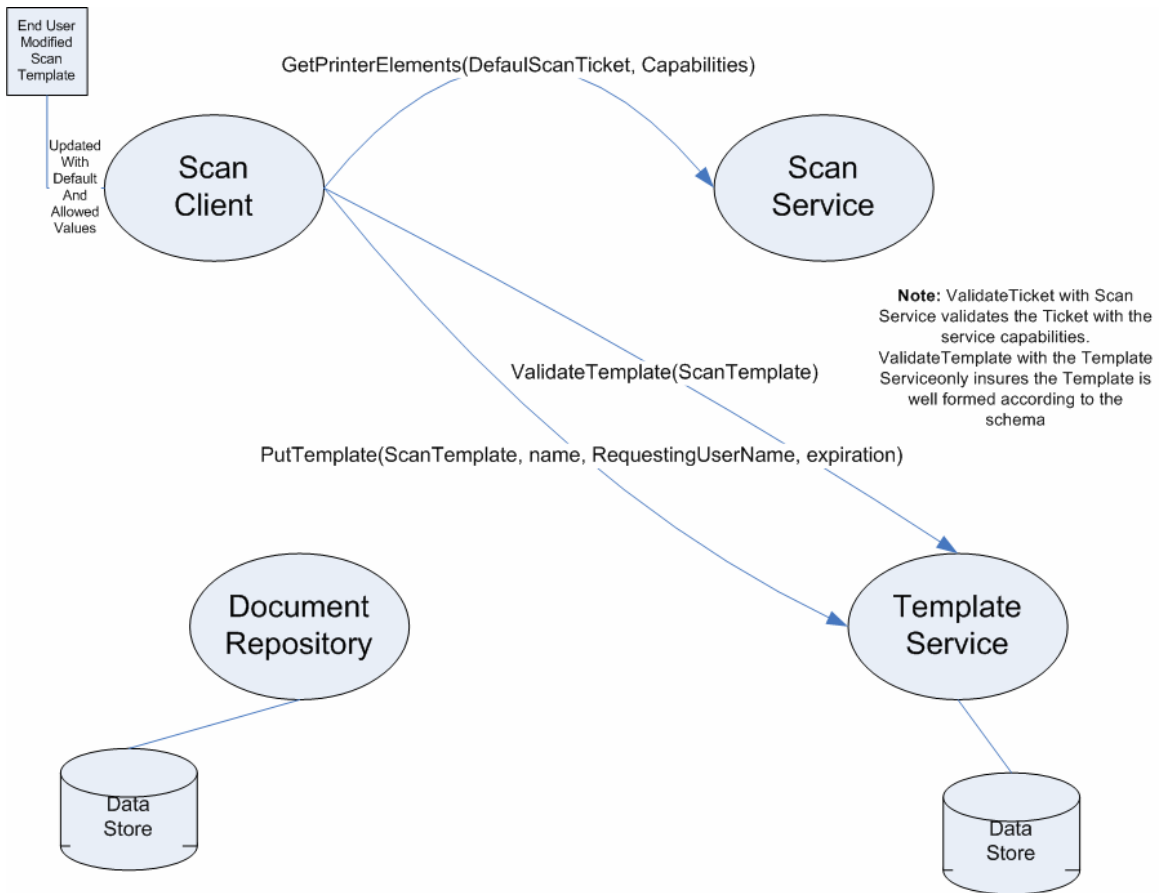
2. Review of wd-mfdscan10-20070921.doc

- Page 34 Fig. 18 detailed state transition diagram is very hard to read.

AI – Peter Zehler – Rework Detailed Service Transition Diagram

1 3. Discussions of the “Create Scan Job Template from a Remote Scan Client” use
2 case.

3 The discussion focused on its protocol, object attribute, and security ramifications
4



5

6

7 Pete reviewed the Scan Service interfaces, Template Service interfaces, data objects,
8 attributes defined so far. Then Pete drew the diagram above as we walked through the
9 “Create Can Job Template from a Remote Scan Client” use case to verify the semantics
10 and identify further requirements needed.

11

12 **ISSUE:** We need to avoid proxy authentication (e.g. Scan Client passes authentication
13 tokens to Scan Service, Scan Service assumes the role of the Scan Client to store data in
14 the Document Repository.)

15

16 **RESOLUTION:** It is the responsibility of the End User to insure that the
17 Document repository access right be set so that the Scan Service has write access
18 to the scan destination and restricts read access as appropriate. Note that this
19 simplifies the system since each entity uses its own security credentials. The
20 rights management of the document repository is not integrated into the Scan
21 Service protocol. The rights management of the document repository is managed
22 outside this protocol. Note: The scan destination should be a directory and the
23 Scan Service will name the file containing the Scan Document.

23

ISSUE: How is the Scan Client informed of the location of his Scan Document?

1 ISSUE: How is the above issue handled for Scan Templates given that templates are
2 simply named vs. Documents that have a URL specifying its location.

3 RESOLUTION: Templates are associated with the originating user.

4 ISSUE: Is there a need to specify what Scan Service is allowed to access the
5 Template or repository as a whole?

6 ISSUE: Is there a need for Restricted Use Scan Template (i.e. restrict the access and use
7 of template stored in the Template Repository to authorized End Users)

8 POSSIBLE SOLUTION: Addition of elements to Scan Template to flag Scan
9 Template as restricted. Add requirement of Scan Service and Template Service to
10 compare user associated with an operation against user name associated with Scan
11 Template.

12 ISSUE: Scan Template identification

13 RESOLUTION: Scan Template must be named, have an originating user name
14 and be typed. The type is already included in the XML namespace. The
15 username and name can be added to the schema or we can overload existing
16 elements.

17 ISSUE: what elements should be used to hold the name of the template and the
18 originating user?

19 ISSUE: What security attributes are needed in the Scan Service protocol?

20 RESOLUTION: We have the RequestingUserName that carries an
21 unauthenticated user name. The semantics from IPP already allows the
22 replacement of the value with a more trusted value if one is available.
23 Implementations are free to use a variety of security framework.

24 25 **4. Discussion points for Friday:**

26 - Validate above resolutions and resolve open issues.

27 - Do we want signed documents or other security on the document content? (The result
28 of this discussion should also be discussed for its applicability to Scan Template.)

29 - Unified data type for semantic elements used in Tickets, DefaultScanTicket and
30 Capabilities.

31 - Walk through some use cases and flesh out operations and data elements.

32
33